

Why Thorne?



**Experience health and
wellness like you've
never felt before.**

Thorne believes in a wholly innovative approach to human health – an approach that illuminates how powerful, precious, and beautiful good health truly is.



We set out to defy expectations of “good” health – and endeavored to unlock your fullest potential. We believe that when you optimize your health, you’ll be amazed at the unexpected and exhilarating ways your life improves.



**The most innovative ideas
are born in response to
important problems.**

The problem we sought to solve: *How can we take a more human approach to health?*

We set out not only to change how people understand their personal health, but also to give them the tools they need to take action to improve their health. To achieve that, we began teaching the idea that health isn't black or white – you are not simply healthy or sick. Health exists within a spectrum of color.

Through the best insights, education, and nutritional support, good health can be heightened. We combined innovative science with our values of ingenuity, integrity, and complete transparency – to make health simple, individual, and more human.

Our legacy as an innovative brand in human health stems directly from those values. It's this commitment to integrity and science that has helped us earn the trust of thousands of health care practitioners, as well as U.S. National Teams, the Mayo Clinic, and families around the world.



So, why Thorne?

Because we believe that “good health” can always be made better – that no one should be limited by a definition of health that’s anything less than optimal.



Clinical research

We only use ingredients that have been validated by clinical research to be safe and effective for their intended use.



Architecting a better you

Personal health tests to help you understand your health and discover supplements to unlock your full potential.



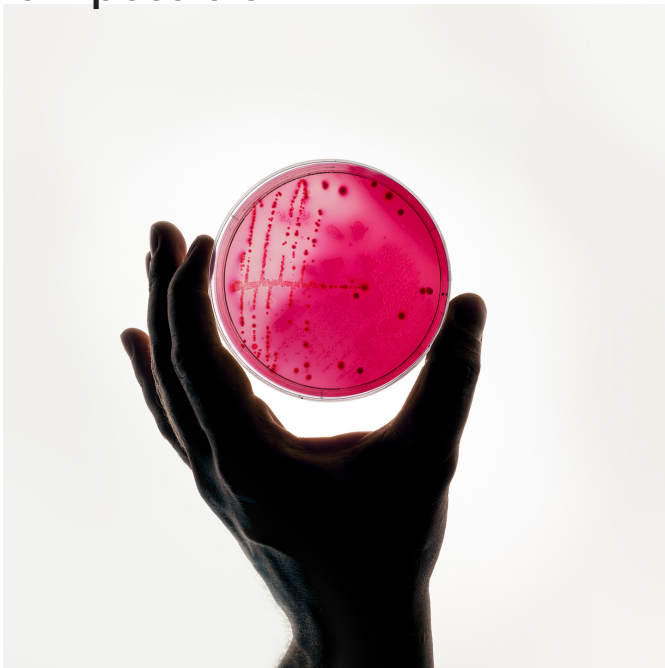
Integrated approach

Finding out what your body needs is only half the solution. Giving it to you is the other half. We are an integrated company that delivers the whole solution – from beginning to end.



**We take pride
in our process.**

Thorne is forging the path forward by elevating the science in our industry and by achieving levels of quality once thought impossible.



We invest in comprehensive testing, sourcing the highest-quality ingredients and creating the cleanest manufacturing process, to provide unparalleled solutions for your health.

While other companies in the industry care more about how their products look than how their products work, we believe that all the marketing in the world can't replace real science, real technology, and the industry-leading practices we use to redefine health and wellness.

01

Sourcing only the exceptional

Designing the next generation of health solutions all starts at the source. And we take sourcing our ingredients seriously.

Our research and development team searches the globe to find only the purest, highest-quality ingredients for our nutritional supplements.

Incoming ingredients are quarantined in our facility until they are tested and verified.

Utilizing state-of-the-art testing equipment operated by highly skilled chemists, microbiologists, and laboratory professionals, we test for raw ingredient contaminants and to verify the identity, potency, and purity of each ingredient listed on our product labels.



Ingredient transparency

We are committed to transparency in what we use in our products and why, so you know exactly what you're taking and how it supports your health goals. Our products:

- Never contain banned substances
- Are free from stearates and other unnecessary fillers
- Never contain flavors derived from artificial sources
- Are made using colors derived from natural sources



Factors we consider

- Absorption
- Origin
- Sustainability
- Clinical research
- Purity
- Stability

When sourcing ingredients, we go further to produce supplements that exceed expectations.



Thoroughly tested

We test for every unspecified ingredient that would “contaminate” the raw materials. Including, but not limited to:

- Heavy metals
- Pesticide residues
- Residual solvents
- Mold
- Microorganisms
- Banned substances

02

Manufacturing the right way

Using the best equipment available, our quality team methodically tests our raw ingredients, and then our production team meticulously crafts each supplement with the utmost consideration for every single detail, from mixing the raw materials and encapsulating the formula to bottling the finished product.

Because we manufacture most of our products in our facility in Summerville, South Carolina, we have total control over what goes into our products. We refuse to use magnesium stearate or any other arbitrary filler that can inhibit absorption. Using unnecessary ingredients goes against our belief to design and provide only optimal solutions for health. To meet the highest quality standards, we also ensure that our facility is third-party certified.

***An unparalleled commitment
to quality throughout our
entire manufacturing process***

cGMP

Thorne has a sterling record of compliance with the Current Good Manufacturing Practices (cGMP) regulation set by the U.S. Food and Drug Administration. Our manufacturing facility, warehouses, and shipping centers have passed every inspection without issuance of an FDA Form 483.

TGA

Thorne has an A rating from Australia's Therapeutic Goods Administration, widely recognized as the toughest regulatory agency in the world. Only a handful of U.S. companies have achieved this certification, and Thorne was the first U.S. nutritional supplement company to be fully certified.



Thorne has more than 25 products that are NSF Certified for Sport®, which gives athletes complete confidence in our nutritional supplements. This is particularly important for the U.S. National Teams and athletes of the NBA, NFL, and UFC we partner with as an exclusive provider.

03

4 rounds of rigorous testing

We have two state-of-the-art, in-house laboratories that enable us to conduct four rounds of testing, while most of our competitors test only once or twice.

At Thorne, we pride ourselves on the safety, efficacy, and integrity of our products. That is why we continually raise industry standards for quality and purity.

Round 01

Raw materials & components

— We test every raw material and component. In our in-house laboratory we verify ingredient identity and potency and screen for raw material contaminants.

Round 02

In-process testing

— In-process testing ensures the correct amount of ingredients are used in our formulations, and we stringently check for bottle, label, or capsule defects throughout the manufacturing process.

Round 03

Finished product testing

— Before being released for sale, finished products are tested to confirm the identity, potency, and purity of the finished formula, and to confirm that no microbiological contamination occurred during manufacturing.

Round 04

Stability testing

— We test product stability to confirm a product will meet its label claims up to the product's expiration date.

04

Sustainable thinking

We're always asking, What kind of impact do we want to leave on the world? And all of us at Thorne believe it must be a positive one. You can't improve human health and wellness if you are hurting the environment.

So we implement environmental best practices throughout every aspect of our operation.

Our ethics extend to *ecological and cultural responsibility.*



Technologies

／ To make a game-changing impact on reducing our carbon footprint, we invested in R&D and produced a new technology to deliver supplements. Out of this effort we launched a revolutionary line of dissolvable supplement discs. These products reimagine the way supplements are delivered and packaged – eliminating the reliance on plastic.

Ingredients

／ We source ingredients in a responsible way that is protective of our environment by refusing to source endangered botanical ingredients. We take pride in being a steward of the botanical ingredients we use in our products. If we learn a botanical ingredient is becoming endangered or find that over-sourcing is diminishing the quality of an existing supply, then we will discontinue the ingredient's use in our product line and recommend a different botanical raw ingredient with a similar mechanism of action – but only after assuring the new ingredient has a quality profile that meets our standards.

Shipping

／ As our sustainability roadmap evolves, we are working on long-term solutions to eliminate unnecessary paper waste, including an innovative paperless “pick, pack, and ship” system. From our shipping boxes to the fill-air pillows and padded packs inside them, almost all of our shipping supplies are made from recycled materials.



**Pro formulas.
Pro performance.**

The choice of U.S. National Teams and more than 100 professional sports teams, including championship-winning teams of the MLB, NHL, and NFL.

At Thorne, we help athletes perform at their best by addressing performance issues through testing, data-based solutions, and premium supplements.



**Championship
teams that
trust Thorne**

2020

Professional
Soccer Champion

2020

USA Women's Rivalry
Cup Champion

2021

Professional
Hockey Champion

2021

Professional
Baseball Champion

2022

Professional
Football Champion



**To improve your health,
you must first understand it.**

Test. Teach. *Transform.*

By defying expectations of what good health means, Thorne not only helps individuals understand their bodies but also gives them tools to uncover their full potential.

We achieve our mission through a complete model for health and wellness that tests, teaches, and transforms how the human body thrives.

Test

— The first step begins with answering the question, “What can I take to improve my health and wellness, and why?” To answer, Thorne offers a collection of convenient and comprehensive health tests using multi-omics data for a range of health areas, including sleep, stress, weight management, gut health, and biological age. Each test includes a personalized, AI-driven, actionable health plan with diet, activity, and supplement recommendations based on the individual’s test results.

Teach

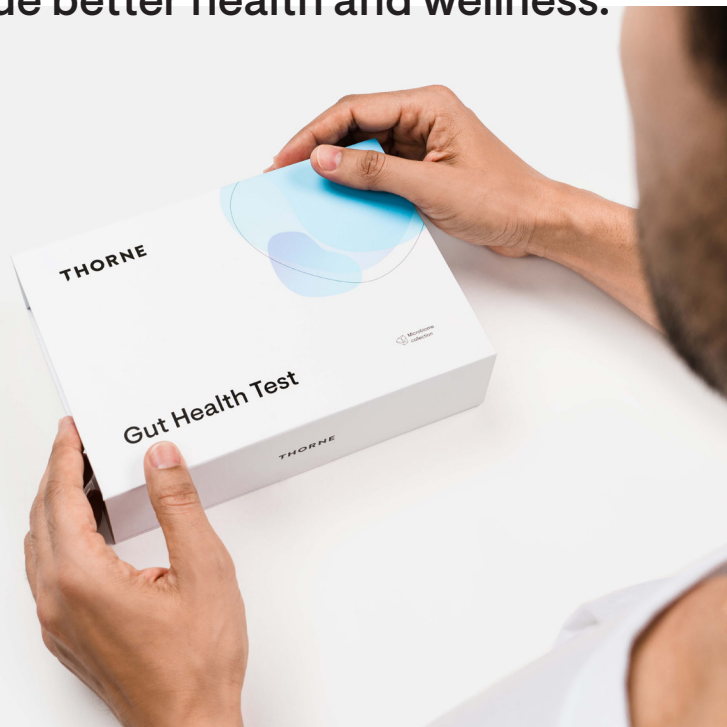
— To help individuals understand their bodies, we offer educational resources that teach, empower, and engage individuals as they begin their health and wellness journeys. Thorne’s personalized education includes supplement quizzes, wellness guides and content, and connections with health professionals in our network to help analyze test results.

Transform

— Achieve health and wellness beyond what was once thought possible through personalized, scientific nutritional supplements that transform the concept of good health beyond simply “good enough.”



We go to extraordinary lengths to continuously and relentlessly pursue better health and wellness.

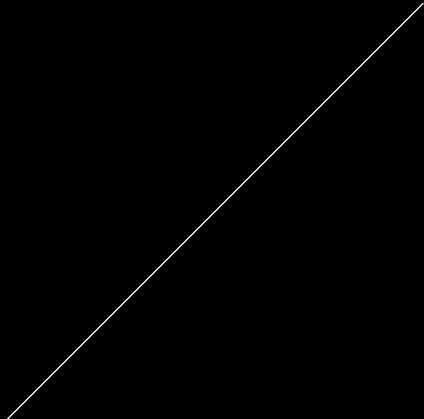


Currently available health tests

- Advanced Health Panel
- Biological Age Health Panel
- Essential Health Panel
- Fertility
- Gut Health
- Menopause
- Sleep
- Stress
- Thyroid
- Vitamin D
- Weight Management

By integrating health tests, wellness education, and nutritional product intervention, Thorne goes above and beyond to assure the most innovative solutions for your health and wellness.

**This is health,
redefined.**



THORNE

800-228-1966 | support@thorne.com | thorne.com